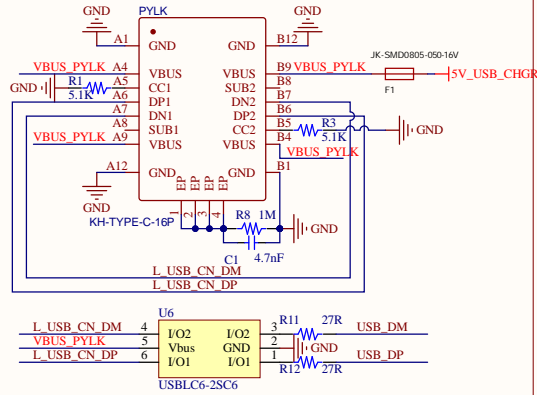
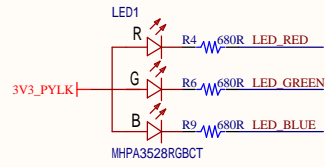


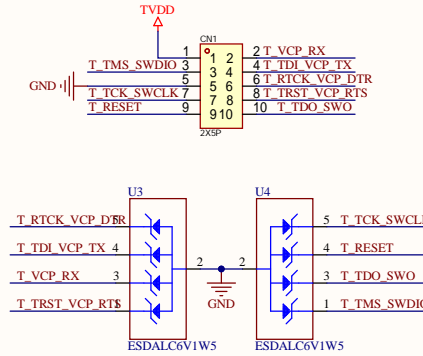
## USB



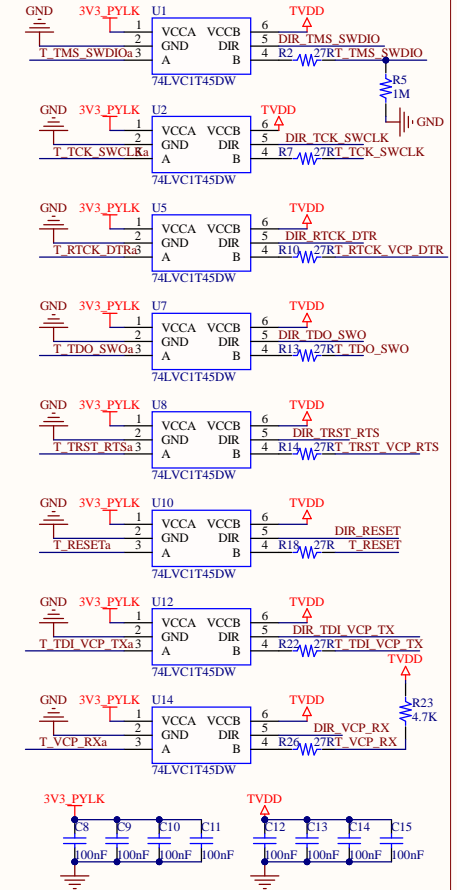
## LED



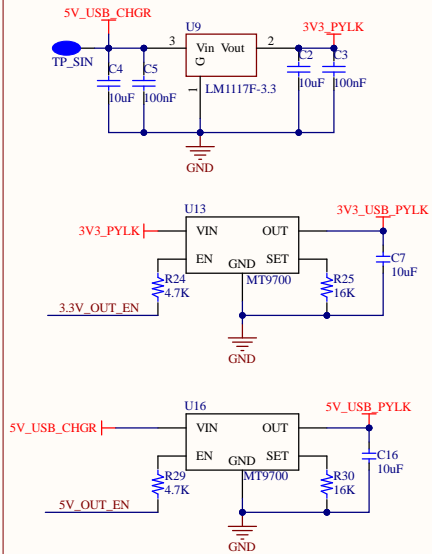
## Debug Connector



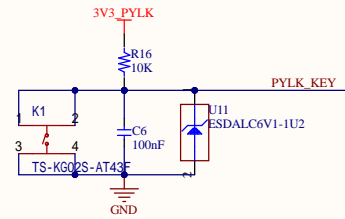
## Level Shift



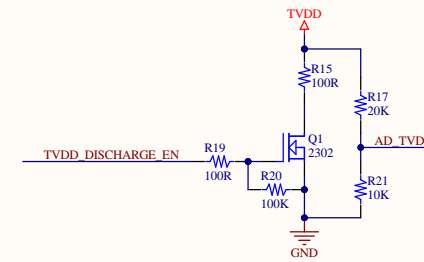
## Power



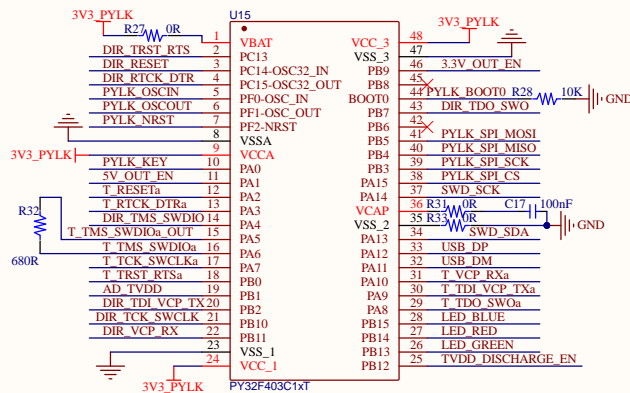
## Key



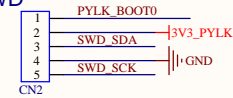
## ADC&Electric discharge



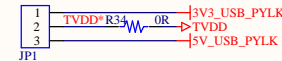
## MCU



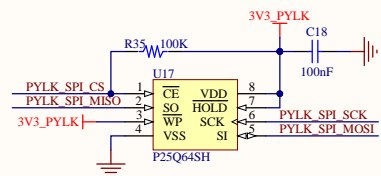
## SWD



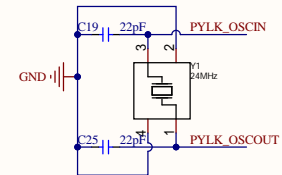
## TVDD\_Selection



## Flash



## OSC

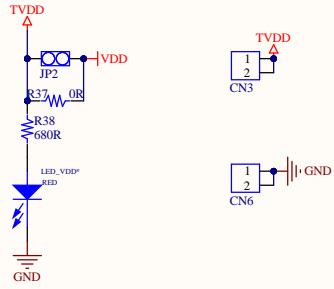


When the DIR pin is set to logic high (1), the data direction is from VCCA to VCCB.  
When the DIR pin is set to logic low (0), the data direction is from VCCB to VCCA.

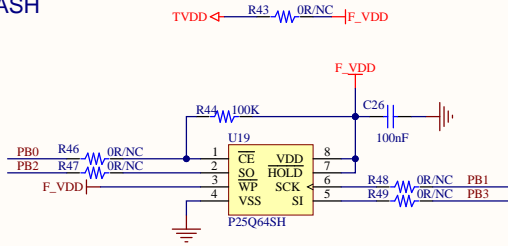
T\_TRST\_VCP\_RTS  
T\_RTCK\_VCP\_DTR  
T\_TDI\_VCP\_TX  
T\_VCP\_RX  
T\_TDO\_SWO  
T\_RESET  
T\_TCK\_SWCLK  
T\_TMS\_SWDIO



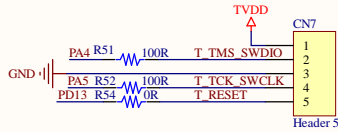
## VDD\_Selection



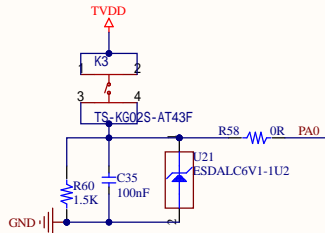
## FLASH



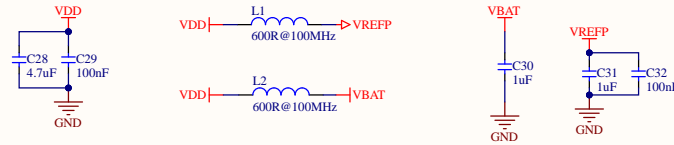
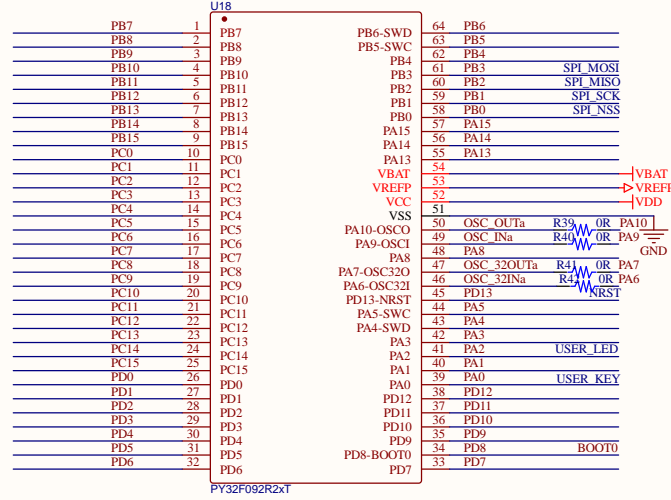
## Debug Connector



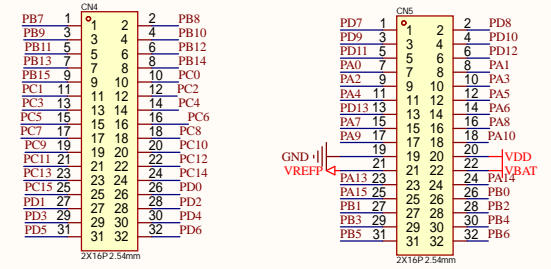
## Key



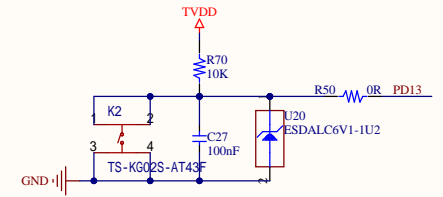
## MCU



## Extension PIN



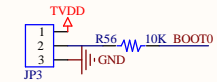
## NRST



## Led



## Boot\_Selection



T_TRST_VCP_RTS	<< T_TRST_VCP_RTS
T_RTCK_VCP_DTR	<< T_RTCK_VCP_DTR
T_TDI_VCP_TX	<< T_TDI_VCP_TX
T_VCP_RX	<< T_VCP_RX
T_TDO_SWO	<< T_TDO_SWO
T_RESET	<< T_RESET
T_TCK_SWCLK	<< T_TCK_SWCLK
T_TMS_SWDIO	<< T_TMS_SWDIO

## OSC

